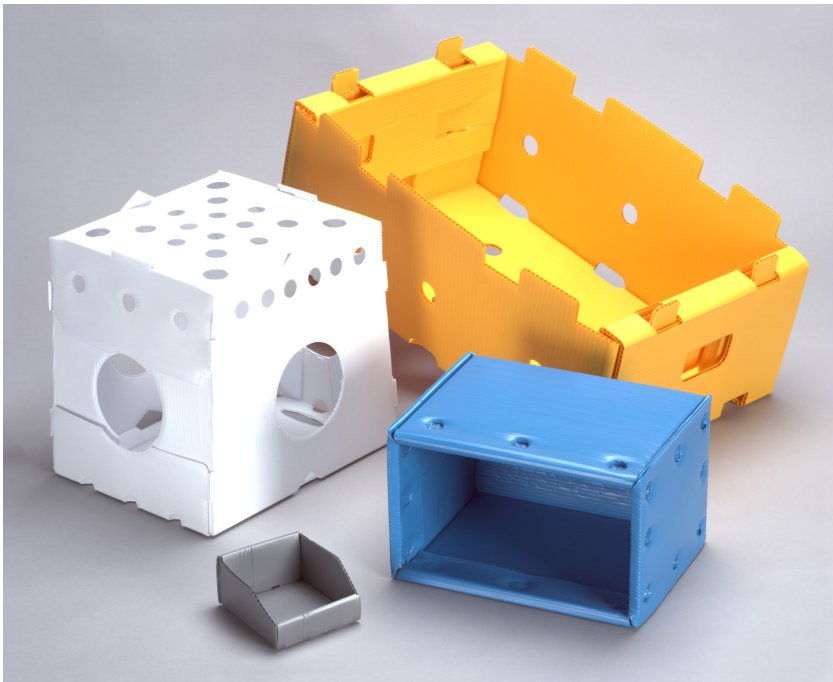


# Coroplast® Packaging

Coroplast® corrugated sheets are excellent for reusable packaging. They can be converted into boxes, bins, totes, and dividers. This product is ideal for indoor and outdoor applications.



## Features & Benefits

- Lightweight
- Usually designed to ship flat when empty
- Withstands temperature extremes from -17°F to 230°F
- Decreases product damage better than corrugated paper
- Greatly reduces shipping costs
- Sanitary & maintenance-free durability
- Maintains near new appearance for years
- 100% recyclable and environmentally friendly

## Applications

- Produce packaging
- Warehouse organization
- Business-to-business
- Distribution center to store
- Dunnage
- Automotive parts & trunk covers

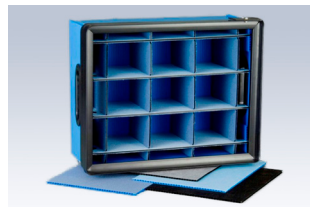
Produce Packaging



Warehouse Organization



Dunnage



Automotive Parts





## Comparison Test

Properties	Coroplast® Corrugate	Paper Corrugate
Weight for test	0.15 lbs. / sq. ft.	0.15 lbs. / sq. ft.
Water absorption in 24 hours	0.02%	75%
Edge crush	45 lbs. / sq. ft.	5 lbs. / sq. ft.
Flat crush	80 lbs. / sq. inch	3 lbs. / sq. inch
Tear strength	1,700 grams	10 grams
Tensile strength	4,000 lbs. / sq. inch	200 lbs. / sq. inch
Impact dart	320 inches / lb.	32 inches / lb.
Heat deflection load (66 lbs. / sq. inch)	174°	N/A
Living hinge	21,000 cycles	1,000 cycles

The tests were conducted at 72°F with 50% relative humidity. The test samples were standard 4mm (150 lb.) polypropylene corrugate and 250 lb. c-flute corrugated paperboard. No additives were in the samples tested.

Coroplast corrugated sheet strength and durability have no direct relationship to corrugated fiberboard. The figures provided are offered as a guide and may vary with resin batch and production quality of the finished container. The USAF has established a specification MIL-P-83668 (USAF) for plastic corrugated packaging applications.

## Results

The test results of same-weight equivalent materials indicated that Coroplast sheets performance exceeded, in every area, the corrugate paper performance. This was especially true in the areas of the heat deflection load at 66 lbs. / sq. inch. All strength test properties areas indicated a minimum ten-fold advantage (edge crush) with Coroplast corrugate over the paper corrugate. In some instances, Coroplast sheets had a 3,750 fold (water absorption) advantage.

It is also important to remember that comparison does not test contamination issues of the paper corrugate versus Coroplast corrugate inert properties associated with chemicals, acids, detergents, greases, and oil. However, the result of water absorption test does give a hint of the expected test result of absorption of acids, chemicals, greases and oils. Thermal and hinge tests are an area that have unique properties addressed on by Coroplast corrugated sheets.

Overall, the end results show that Coroplast packaging protects your products better than corrugated paper.

